

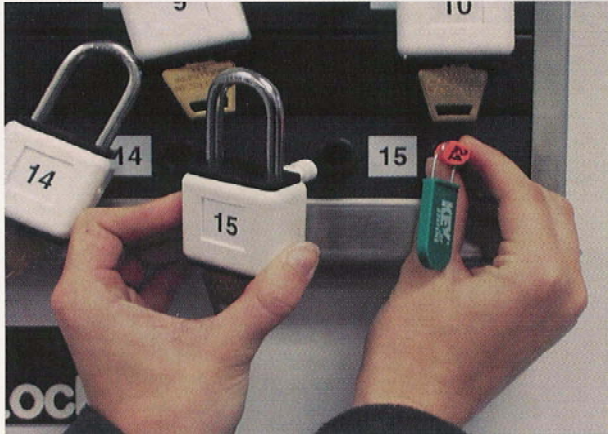
LockTracker

An easy - to - use Lock Management System

3 Easy Steps



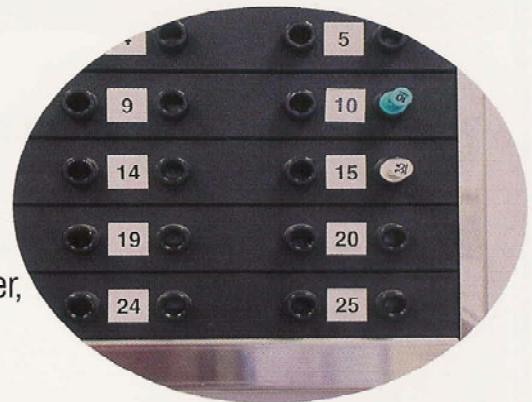
You Cannot Manage What You Do Not Control!



1. Insert access peg into port next to lock needed. Turning the access peg a quarter turn left releases the lock.



2. Remove the lock from the board. Your access key is secured to the board. It cannot be removed until the lock is returned. Since the access peg is marked with a user ID number, you know at a glance who is accountable for the lock.



3. Return the lock to its assigned port. A quarter turn right frees your user access peg. The Lock is once again secured to the board.

KeyWarden Systems P. O. Box 310708 New Braunfels, TX 78131

Tel: 800.453.5397 Fax: 775.898.1807

www.keywarden.com